

Portable Ultrasound Probe for Education **fST9500/9600**



Lequio Power Technology provides you with a reasonably priced probe which makes 'One Probe for One Student' possible.



2.8~4.0MHz Convex Probe

fST9500

6.7~8.0MHz Linear Probe

fST9600

Product Features

◆ Low Initial Cost

Along with the device's affordability, you can use PC you own as a display so no additional purchases are necessary.

◆ Useful Function

Our original function, 'SyncView', provides you with new means for reviewing and receiving feedback.

*Refer to backside for details.

◆ Resolution

Despite its affordability, our device has high resolution and a great cost-performance ratio.

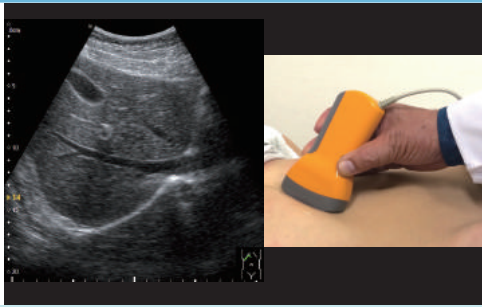
◆ User Friendly

You just need to install software and it's ready to scan. Functions are limited to basics for educational use.

◆ Portability

Weighing only 265g, our probe is designed to be easily carried anywhere including the field.

SyncView Function

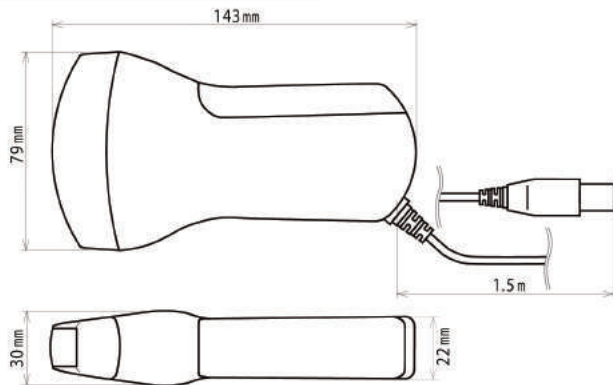


It realizes a revolutionary learning experience.

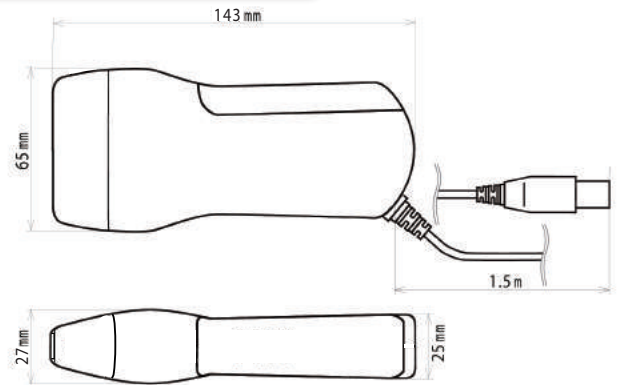
Probe location can be simultaneously recorded with ultrasound image. This function will make it easier to check if you are scanning the correct area with the correct angle.

Dimension

fST9500 Convex Probe



fST9600 Linear Probe



Hardware Spec.

	fST9500 (Convex Probe)	fST9600 (Linear Probe)
Probe Weight	265g (Incl. cable)	265g (Incl. cable)
Power Consumption	3~8.5W	3~8.5W
Probe Supply Voltage	5V/1.7A via USB	5V/1.7A via USB
Scan Frequency	2.8/3.3/4.0MHz	6.7/8.0MHz
Curvature	60mmR	—
Field of View	60°	38mm
Scan Depth/Angle	73~235mm	73~120mm
Sound Safety	MI under 1.0	MI under 1.0

Major Function

Scan	B Mode BB Mode BM Mode
Measurement	Distance Area Ellipse OB/GY *OB/GY is available only for convex.
Image Browsing	Still images (JPEG) Motion images (MP4)

PC Requirement

OS	Windows 8.1 Windows 10
CPU	intel Core i3~ AMD A4~ (Clock Frequency 2GHz~)
Memory	4GB~
Display Resolution	1,280×800~
Interface	USB 2.0/3.0

*This product (fST9500 / fST9600 and its software) has not received approval as a controlled medical device as stipulated under the Law on Securing Quality, Efficacy and Safety of Products including Pharmaceuticals and Medical Devices. This product may not be used for the diagnosis, treatment or prevention of disease in humans or animals, nor used with the intention to affect the structure and functions of a human or animal body.

*Please read the instructions prior to use.

*Please note that the specification can be modified without notice.

*Please note that the color of product can be different from the picture on the brochure.