

USB Probe US-304AC/US-304AL

► High Quality and Reliable

Designed and manufactured wholly in Japan. Japan made hardware and software with high reliability.

► User Friendly Device

User friendly and easy to understand interface that requires minimum training.

► Affordable Price

- Cost of each unit is less than a quarter of ultrasound devices in the market.
- Designed to work with windows PC that significantly reduces initial cost and maintenance cost.
- Affordable price expands the possibility of wider access to reliable ultrasound imaging diagnosis for medical professionals, academics, and researchers.

► Useful Function, 'SyncView'

Probe locations can be simultaneously recorded.

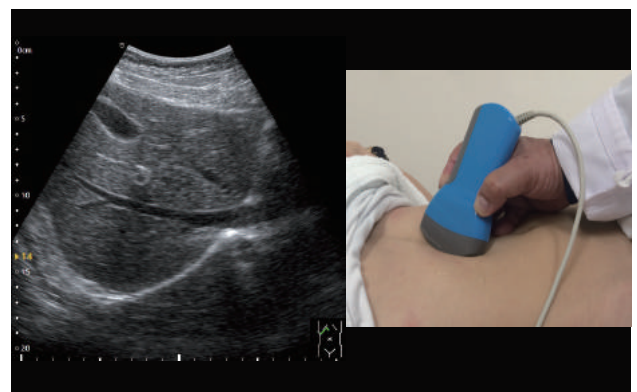
This original function provides you with new means for reviewing and receiving feedback after training. 'SyncView' will make it easier to check if you are scanning the correct area with the correct angle.



**Convex Probe
US-304AC**



**Linear Probe
US-304AL**



Please be notified that medical certificate has not been obtained for this product (US-304AC/AL and its software) except for some countries. Please check whether this product obtains certification in your country or not. If not, it may not be used for medical purposes, research, experimentation and other activities or specialized measurements that require precision. It is recommended to use this for purpose of study or education only. Please note that the specification can be modified without notice. Please read the instructions prior to use. Please note that the color of product can be different from the picture on the brochure.

Product Overview

Hardware Spec.	US-304AC Convex	US-304AL Linear
Probe Weight	265g (Incl. cable)	265g (Incl. cable)
Power Consumption	3 ~ 8.5W	3 ~ 8.5W
Probe Supply Voltage	5V/1.7A via USB	5V/1.7A via USB
Scan Frequency	2.8/3.3/4.0MHz	6.7/8.0MHz
Curvature	60mmR	—
Field of View	60°	38mm
Scan Depth	73 ~ 235mm	73 ~ 120mm
Sound Safety	MI under 1.0	MI under 1.0

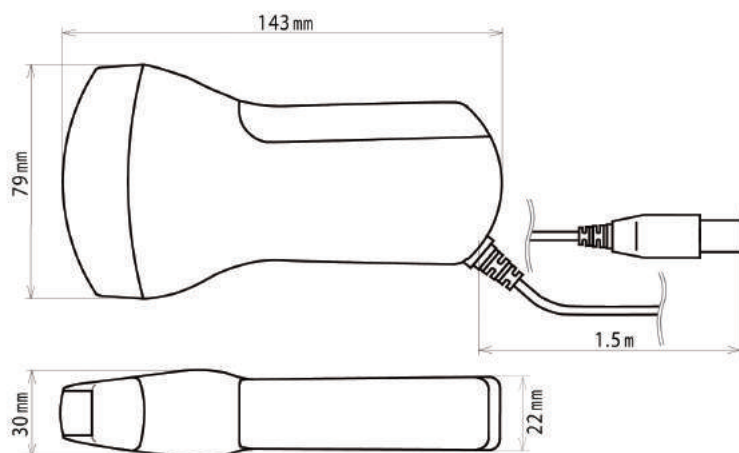
Major Function	
Scan	B Mode BB Mode BM Mode
Measurement	Distance Area (Area and perimeter) Ellipse (Area and circumference) OB/GY *OB/GY is available only for convex.
Image Browsing	Still images (JPEG) Motion images (MP4)

PC Requirement	
Applicable OS	Windows 8.1 Windows 10
CPU	intel Core i3 ~ AMD A4 ~ (Clock Frequency 2GHz~)
Memory	4GB ~
Display Resolution	1,280x800 ~
Interface	USB2.0/3.0



Dimension

US-304AC



US-304AL

