



USB Probe US-304AC

▶ High Quality and Reliable Ultrasound Device

Designed and manufactured wholly in Japan.
Japan made hardware and software with high reliability.



▶ User Friendly Device

User friendly and easy to understand interface that requires minimum training.

▶ Wide Range of Application

With only **265 gram** of weight, the ultrasound probe is light to carry and easy to use.

Low power requirement of **3~8.5W** enables the great portability of the products. Power requirement differs depending on operating setup.

Working with regular Windows **8.1** and Windows **10** PC.

Power supply from PC through **USB** interface enables medical examination even at remote fields without power supply.

Easy and flexible image transfer to other PCs, just like sharing photos. Useful for remote diagnosis.

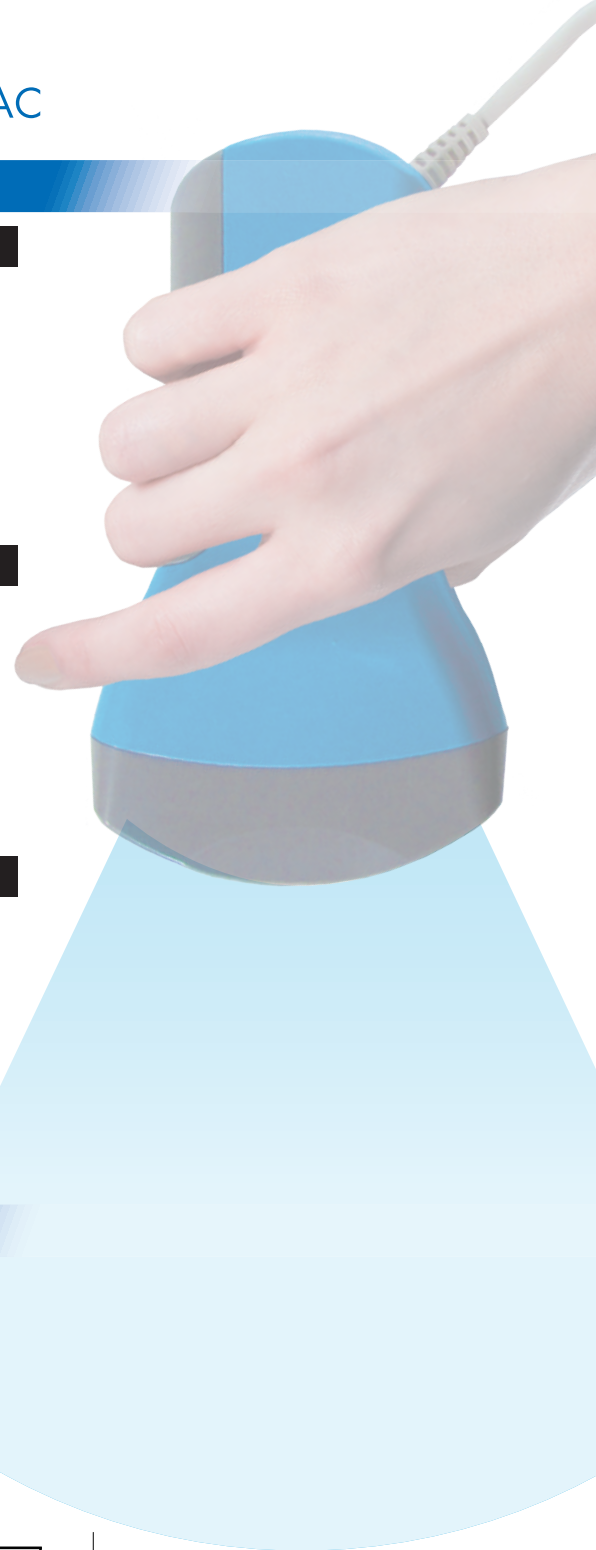
"SyncView" mode makes users easy to have assistance from remote doctors.

▶ Affordable Price

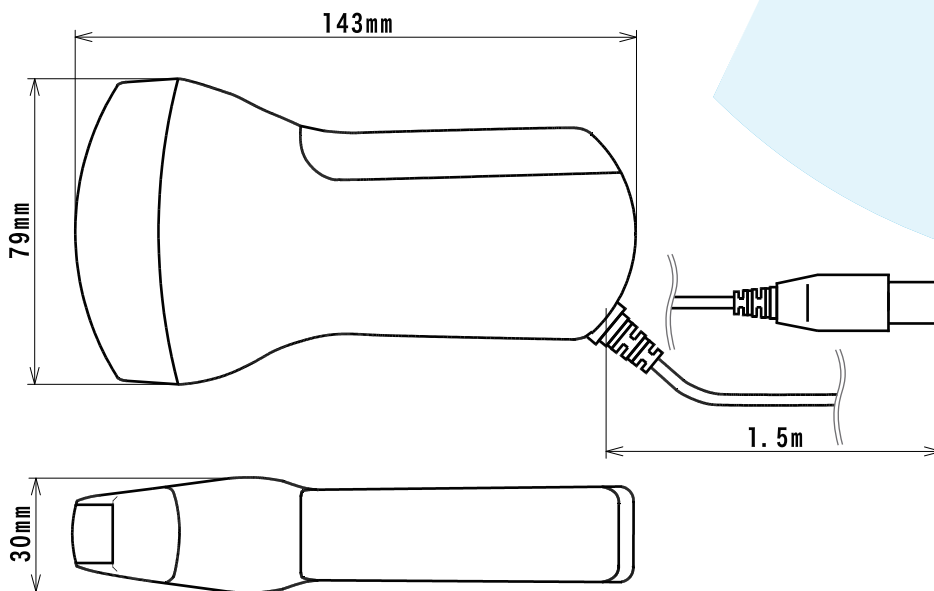
- Cost of each unit is less than a quarter of conventional ultrasound machines in the market.
- Designed to works with windows PC that significantly reduces initial and maintenance cost.
- Affordable price expand the possibility of wider access to reliable ultrasound imaging diagnosis for medical professionals, academics, and researchers.

Product Overview

Hardware Spec.	Numeric Data
Probe Weight	265g
Probe Supply Voltage	5V/1.7A via USB
Probe Power Consumption	3~8.5W
Scan Frequency	2.8~4.0MHz
Curvature	60mmR
Scan Depth/Angle	73~235mm / 60°
Sound Safety	MI under 1.0
Major Functions	Options
Scan	B mode B B mode B M mode
Measurement	Distance Area Ellipse OB/GY
Image Browsing	Still picture (JPEG) Motion picture (MP4)
Software Requirement	Applicable OS
OS	Windows 8.1™ Windows 10™
CPU	intel Core i3~ AMD A4~ (Clock Frequency 2GHz~)
Memory	4GB~
Display Resolution	1,280×800~
Interface	USB2.0/3.0



Dimension



<http://www.okinawa-med.com/index.html>
info@okinawa-med.com



<http://www.lequiopower.com>
info@lequiopower.com